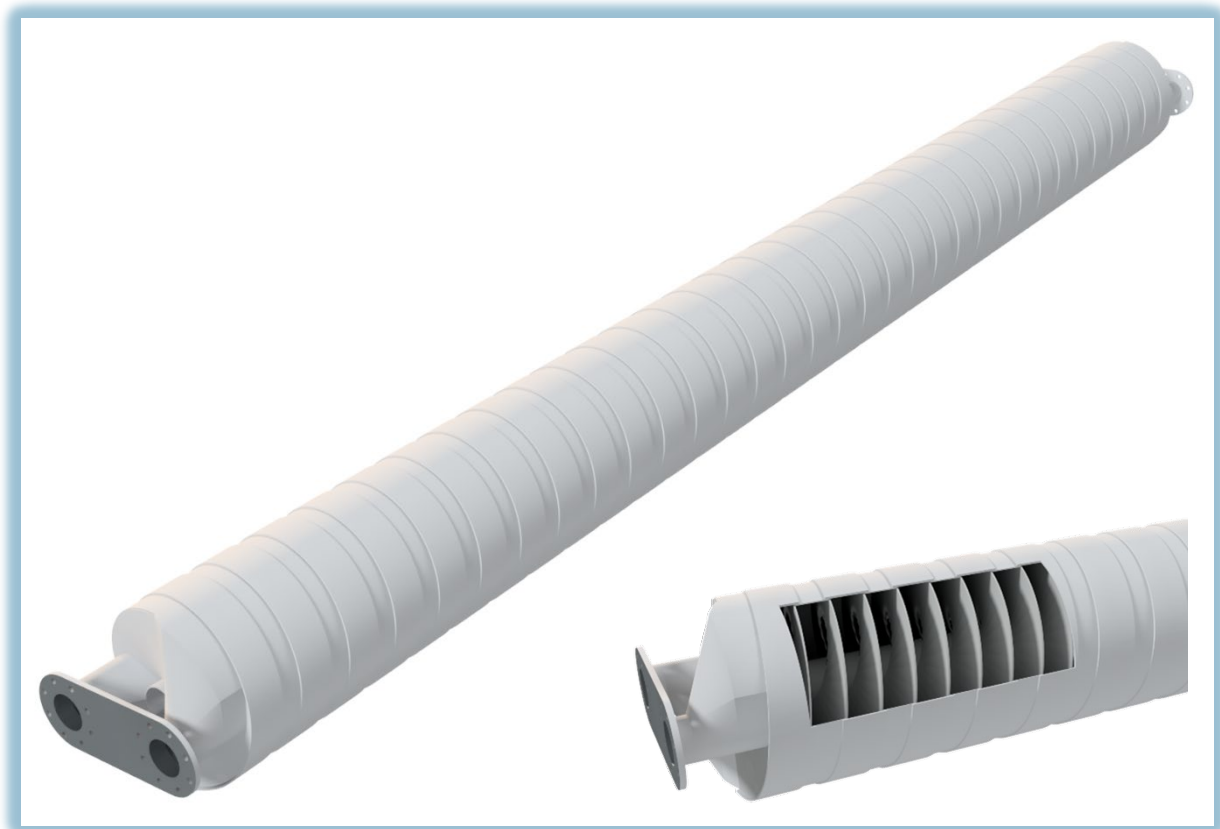


# **BM - SWH**

## **Screw heat exchanger**



**BioMizing ApS**

Langelandsvej 12B, 5500 Middelfart, Denmark

Phone +45 82820030

CVR: 42461725

**WWW.BIOMIZING.COM**

## BM - SWH: Screw heat exchanger



Model 50-600	
Length	6300 mm
Diameter	Ø 510 mm
Connections	DN 100 PN10
Weight, empty	975 kg
Weight, full (without isolation)	Max. 2000 kg
Effective volume	X m <sup>3</sup>
Heat transfer area	X m <sup>2</sup>
Free flow area in screw	X cm <sup>2</sup>
Max. Operating temp.	90 C°
Max. Test pressure	6 bars
Max. Operating pressure	4 bars

**The SWH Exchanger** is a special developed Heat Exchanger mainly used for Biomass and Sludge combined with Digesters. Heat exchanger is supplied in two different types:

**B/B** is for Biomass/Biomass

**B/W** is for Biomass/Water

The screw consists of two parallel chambers, based on spiral elements mounted on a Ø114,3 mm center shaft. The chamber section area 85x198 mm secure optimal media rotation and heat transfer between primary and secondary side.

Heat Exchanger is available in different materials, based on demands.

Surface treatment: carbon steel: primed, stainless steel: pickled.

Heat exchanges could be supplied with connection flanges and mounting brackets.