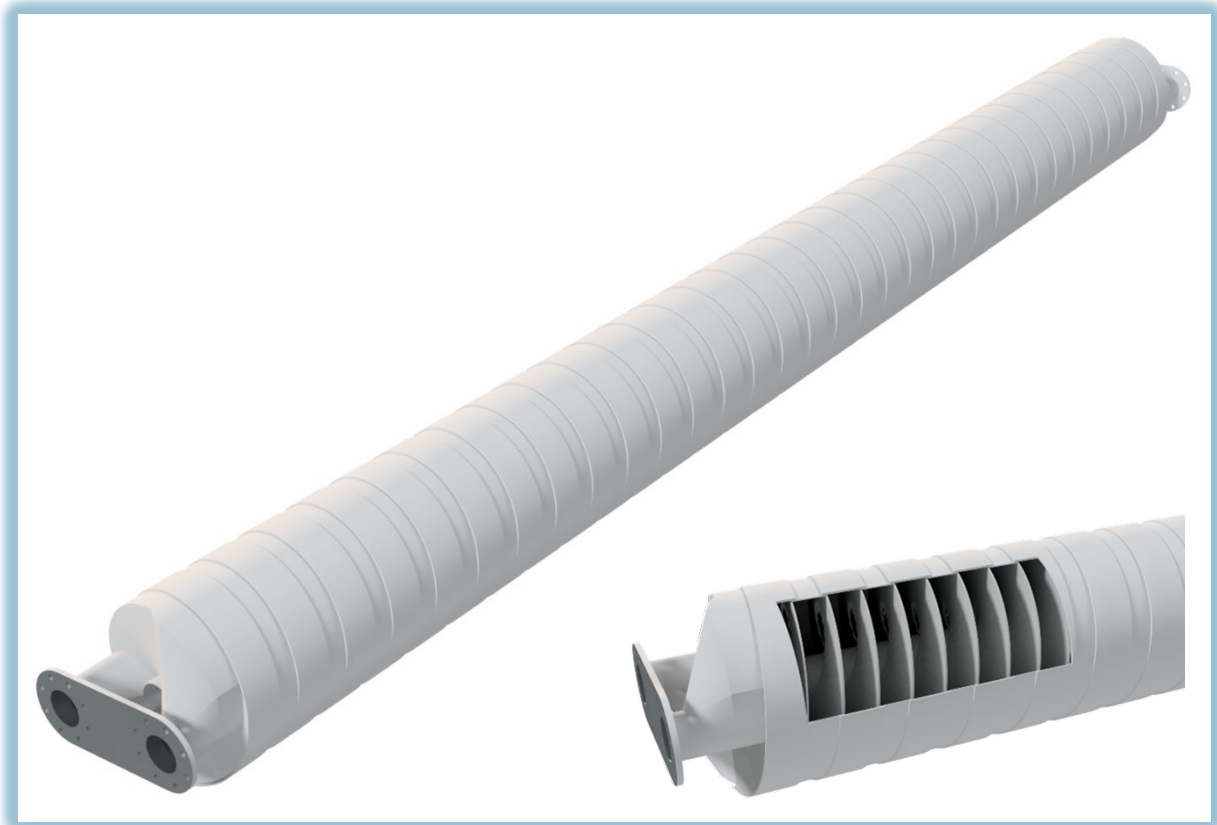


# BM - SWH

## Skrue varmeveksler



**BioMizing ApS**

Langelandsvej 12B, DK-5500 Middelfart

Telefon +45 82820030

CVR: 42461725

**WWW.BIOMIZING.DK**

## BM - SWH: Skrue varmeveksler



1 Billedtekst



2 Billedtekst

Model 50-600	
Længde	6300 mm
Diameter	Ø 510 mm
Tilslutninger	DN 100 PN10
Vægt, tomt	975 kg
Vægt, fyldt (uden isolering)	Maks. 2000 kg
Effektiv volumen	X m <sup>3</sup>
Varmeoverførsel område	X m <sup>2</sup>
Frit flowområde i skrue	X cm <sup>2</sup>
Maks. driftstemperatur	90 C°
Maks. test tryk	6 bar
Maks. driftstryk	4 bar

**The SWH Exchanger** is a special developed Heat Exchanger mainly used for Biomass and Sludge combined with Digesters. Heat exchanger is supplied in two different types:

**B/B** is for Biomass/Biomass

**B/W** is for Biomass/Water

The screw consists of two parallel chambers, based on spiral elements mounted on a Ø114,3 mm center shaft. The chamber section area 85x198 mm secure optimal media rotation and heat transfer between primary and secondary side.

Heat Exchanger is available in different materials, based on demands.

Surface treatment: carbon steel: primed, stainless steel: pickled.

Heat exchanges could be supplied with connection flanges and mounting brackets.